

|                  |   |               |
|------------------|---|---------------|
| 1) CONSTRUCTION: |   | NOM. DIA.     |
| CONDUCTOR:       | 18 AWG 7/26 STRANDED TINNED COPPER  | .048"         |
| INSULATION:      | POLYVINYLCHLORIDE, .012" NOM. WALL THICKNESS  | .072"         |
| CABLE:           | (3) COLOR CODED SINGLES TWISTED TOGETHER WITH FILLERS AND WRAPPED WITH A CLEAR POLYESTER TAPE TO FORM A CABLE CORE. | .158"         |
| JACKET:          | POLYVINYLCHLORIDE, BLACK, .046" NOM. WALL THICKNESS   | .250" ± .010" |
|                  | (PRESSURE) OVERALL CABLE DIAMETER   | (BY PI TAPE)  |

2) PHYSICAL PROPERTIES:

|                          |           |
|--------------------------|-----------|
| TEMPERATURE RATING, MAX. | 105°C     |
| TEMPERATURE RATING, MIN. | -20°C     |
| WT./M', NOM., NET.       | 41.7 LBS. |

3) ELECTRICAL CHARACTERISTICS:

|                               |              |
|-------------------------------|--------------|
| CAPACITANCE, MUTUAL, NOM.     | 23 PF/FT     |
| DIELECTRIC WITHSTANDING, MIN. | 1500V RMS    |
| VOLTAGE RATING, MAX.          | 300V RMS     |
| D.C. RESISTANCE, MAX.         | 6.54 Ω/1000' |

4) AGENCY APPROVALS:

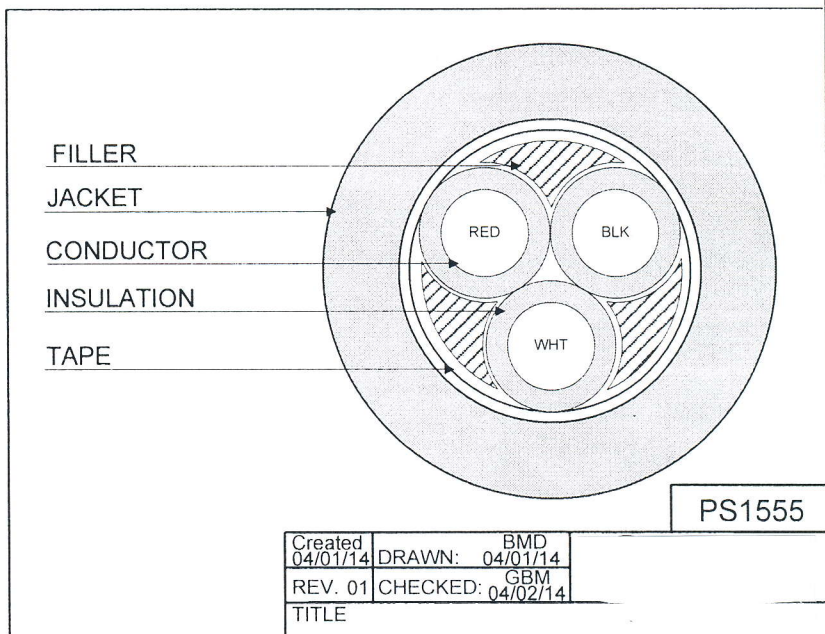
5) APPLICATION:  
RoHS COMPLIANT MATERIALS.

6) PRINT: (WHITE INK)  
QUABBIN P/N XXXXX -- (LOT DESIGNATOR)

NOTE: XXXXX WILL BE QWC'S 5 DIGIT P/N TO BE DETERMINED AT TIME OF ORDER.

7) COLOR CODE:  
1. BLACK  
2. WHITE  
3. RED

8) PACKAGING:  
TO BE PACKAGED AS PER QWC'S STANDARD PACKAGING



PS1555

|                     |                          |
|---------------------|--------------------------|
| Created<br>04/01/14 | DRAWN: BMD<br>04/01/14   |
| REV. 01             | CHECKED: GBM<br>04/02/14 |

TITLE  
3/C 18 AWG, PVC PVC CABLE

**PRELIMINARY SPECIFICATION IS FOR DESIGN REVIEW PURPOSES ONLY. A PRODUCT SPECIFICATION WITH A QWC PERMANENT PART NUMBER WILL BE PROVIDED FOR CUSTOMER SIGNATURE BEFORE AN ORDER WILL BE ACCEPTED.**